

BREABACH

Lighting Requirements

We require a competent lighting operator to run our show. This document will give you an outline of what we are looking for in order to create a consistency from show to show.

The show is made up of Scottish traditional songs and tunes so it is more about creating nice scenes and picking out solos with the lighting elements suggested rather than doing anything too distracting.

The stage layout is made up of the 5 performer positions in an arc with a dance area in the middle of that arc downstage centre.

We have a size B gobo that we would like to project on to the back drape/wall behind us. We will require a profile fixture from you with a glass gobo holder rigged in a suitable location to achieve this.

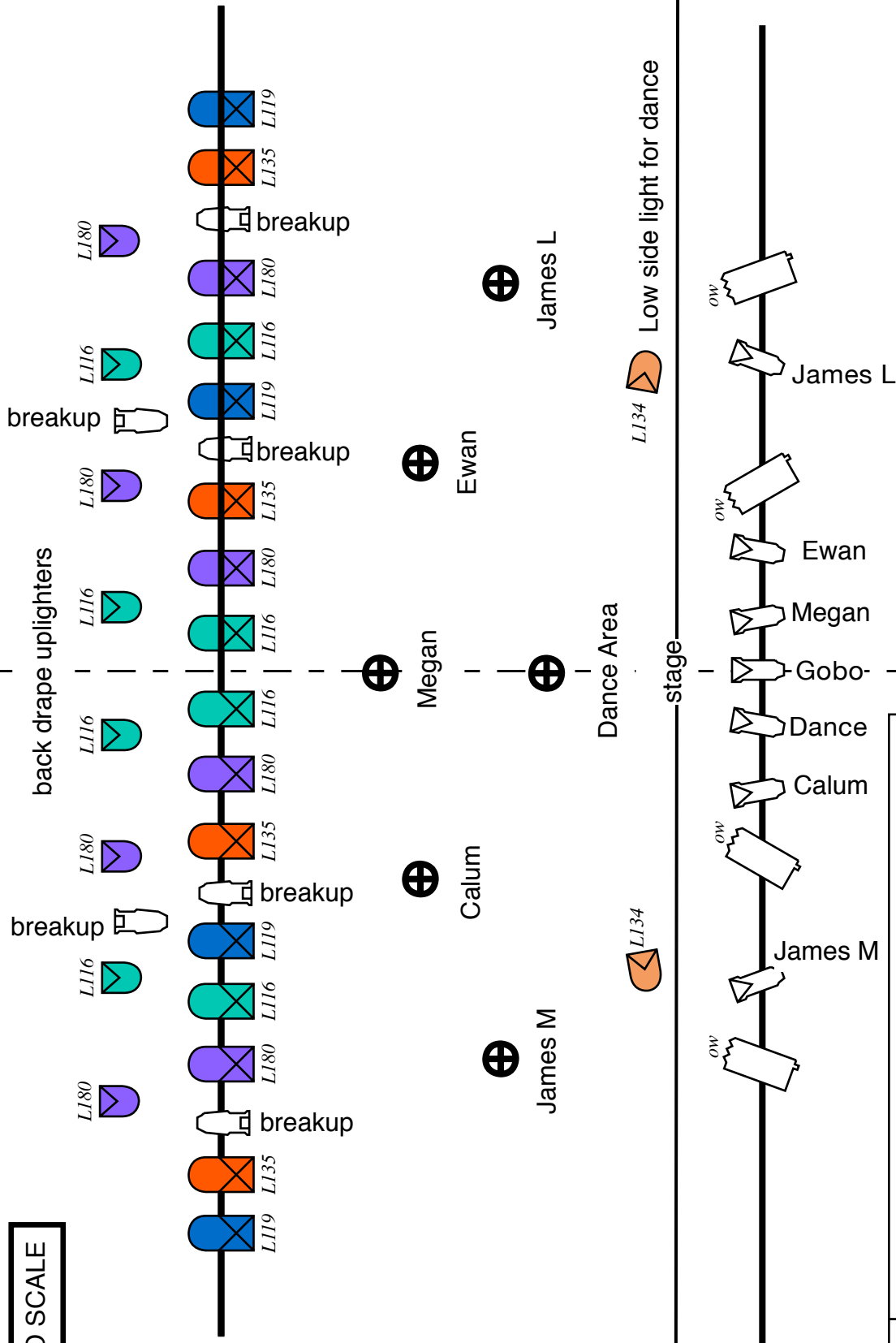
We have supplied a rig plan on the next page as an example but it is essentially made up of the following elements in order of importance...

- Front open white wash to cover performance area.
- 1x Profile to take our size B gobo rigged in a suitable position to project on to backdrop.
- 4/8 Floor cans to up light back drape/wall. LEDs would be fine for this, if not then parcans in L116 (Medium blue green) and L180 (Dark Lavender) paired centre > out.
- 4 Colour back light wash to cover performance area in L116 (Medium blue green), L180 (Dark Lavender), L135 (Deep Golden Amber) and L119 (Blue). Nearest equivalents are fine.
- 6x profiles for key light specials – one on each performer and one on dance area DSC to pick out solos etc.
- 2x Floor cans in L134 (Golden Amber), one either side of stage downstage to side light dance area. Only to be used for dance.
- Backlight dabbled breakup wash to cover performance area.
- 2x Profiles on stage floor with break up gobos to uplight backdrop.

Don't panic if you don't have everything as listed above; just do what you can with what you have based on the suggestions. No additional lighting equipment should incur any costs to us unless it has been agreed in advance.

Please get in touch if you have any questions and we look forward to a great show!

NOT TO SCALE



Key			
<div>⊕</div> <div>⊖</div> <div>⊗</div> <div>⊙</div>	Band Member	Profile Breakup	Fresnel 1200
	Profile Special	Profile 64	Floorcan
	Color	Channel	

BREAKBACH